



BEin
EUROPE



Erasmus+



Guide to support migrant nascent entrepreneurs :

Practical booklet – Portugal

The European Commission's support for the production of this publication does not constitute an endorsement of the content, which only reflects the authors' opinion, and the Commission cannot be held responsible for the use that may be made of the information contained therein.

CONTEXT

«In The Sensitive debate on the place of migrants in the Portuguese society, their contribution to the creation of activities is worth highlighting, as it is synonymous with the desire for professional integration.»



200

This is the number of business projects for immigrant entrepreneurs created in Portugal in the last 10 years. 80% of these foreign investors were able to keep their business initiatives running in the first two years in the market, which are usually the most critical.

According to data now released by the High Commissioner for Migration (ACM,), "this is a much higher value than that which is globally in Portugal for the same period, where there is a survival of only 50%" for any enterprise, especially those that have been launched in the Portuguese territory.

"Between 2008 and 2018, the number of native self-employed decreased by 6% (from 28.4 million to 26.7 million), when it increased in the case of foreigners (+31.1%), both among those born in countries outside the European Union (+58.9%, from 1.4 million to 2.2 million) as among migrants born in another EU Member State (+74.8%, from 0.8 million to 1.3 million)," says the report on "Immigrant Employers and Entrepreneurs : Typology of Business Strategies".

Source: <https://jornaleagora.pt/portugal-lancou-200-projetos-de-negocios-para-empreededores-imigrantes-80-of-these-survived/>

GUIDE PRESENTATION

WHAT ?

A guide listing the main offers in each partner country of the BE PROJECT IN EUROPE and responding to the themes that mark the path of migrant entrepreneurs and the related recommendations. It is orientedly its adaptation one each country, each region, each area, each ethnic, each sought-after specificity.



WHAT FOR ?

Europe and its authorities recognize the strong entrepreneurial potential of people from other countries and cultures, where the creation of the business itself is deeply rooted. There is therefore a real interest in encouraging and accompanying the desire to create your company with this audience.

FOR WHOM ?

This guide is aimed at professionals who are to raise awareness, detect, welcome and guide them migrant entrepreneurs. According to the definition adopted by the Superior Council of Integration, a migrant is a person born abroad and resident in Portugal.



BY WHOM ?

This tool is the result of the Collaborative work of the European PROJECT BE IN EUROPE.

CONTENTS

SUPPORT TO MIGRANT ENTREPRENEURS

05 USER MANUAL

06 LANGUAGE TRAINING

08 ADMINISTRATIVE STATUS

10 TIME MANAGEMENT

12 FUNDING

14 SPECIFIC SUPPORT

16 DIGITAL SUPPORT

18 IDEA BOX

HOW TO USE THIS GUIDE ?

On the left- hand page you will find, in this order :



On each page are ordered the necessary information of a theme to be addressed when supporting the migrant nascent entrepreneurs.

Each theme is identified by a Colour code.

- 1 A definition of the framework in which the topic is accessible
- 2 The definition of terms and/or lexicon to be known.
- 3 A "Council/Analysis" tab to be comfortable with your interlocutor.

- 1.The list of organisations useful for the procedures of the nascent migrant entrepreneur.
- 2.A free space to list the structures present in your area.
3. A "Methodological Support" tab to facilitate your research and the relevance of support.

On the right hand-page you will find, In This order :



LANGUAGE TRAINING



With a person struggling in the field of Portuguese, it is important to be able to define their linguistic situation.

Alpha --> defines person who has not been educated in the language of the country of **origin**.

Illiteracy --> defines a person who followed an educational path without having kept the **basics**.

ADVICE / ANALYSIS

- The language level can be a blocking factor at startup, so it is necessary to work at the same time in language learning.
- Even if the matter may be delicate to discuss with the beneficiary, it is important to do so and propose gently as different existing solutions.
- Find an organization to assess the beneficiary's language level.
- You are aware that some training courses combine language learning and business creation.

LANGUAGE TRAINING

Contact List :

- o English for foreigners: <https://www.acm.gov.pt/pt/-/como-poss0-frequentar-um-curso-de-lingua-portuguesa-para-estrangeiros->
- o <https://pptonline.acm.gov.pt/>

Useful Websites :

- o High Commissioner for The Children's: <https://www.acm.gov.pt/68>

Organisations in my area :

.....

.....

.....

ADMINISTRATIVE STATUS

In a business creation project, the first step is to know the administrative situation of the project holder.



Dual nationality /naturalization -->

The procedures for creating activities, regardless of the legal status chosen, differ depending on the administrative situation of the entrepreneur of nationality.

Administrative status

- I started working. How do I sign up for Social Security?
- To which income applies the IRS?
- Social Security
- Creating your own business

Procedures

- <https://www.acm.gov.pt/-/comecei-a-trabalhar-como-posso-inscrever-me-na-seguranca-social->
- <https://www.acm.gov.pt/-/a-que-rendimentos-se-aplica-o-ir->
- <https://www.acm.gov.pt/trabalhar/seguranca-social>
- <https://www.acm.gov.pt/empree-nder/criar-o-seu-negocio>

ADMINISTRATIVE STATUS

Contact List :

Migrant Support Line :

<https://www.acm.gov.pt/-/linha-sos-imigrante>

Office of Legal Support for Immigrants (GAIJI)

<https://www.acm.gov.pt/-/cna-lisboa>

Organisations in my area :

.....
.....
.....

Useful Websites :

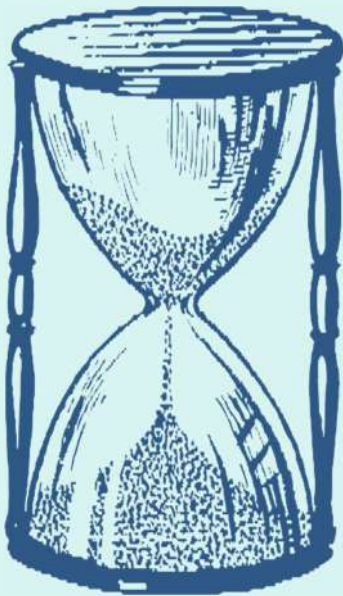
.....
.....
.....

TIME MANAGEMENT

This section lists organisations that offer help in linking time dedicated to a professional activity and/or daily procedures with personal/family life.

These organisations are not exclusively for migrants.

The reconciliation of time brings together the following themes and leads to consider the problems of availability that are linked to them:



Parenting and parenting ---> number and age of children, Education and children's activities, Day care, Financial resources, Isolation, Children's Health Status

Spouse --> professional status, Moral and/or financial support, Involvement of the spouse in the project, Distribution of functions - project/family life, Statute of the spouse of the entrepreneur: partner, employee or employee

Socio-professional status : worker: nature and duration of the contract, Jobseeker : compensated or not, RSA, allowances, mandatory appointments, Students, trainees: course hours, Volunteers, membership: mission schedules and obligations

ADVICE / ANALYSIS

- Work with the project holder in time management: establish a schedule with him with slots during a week dedicated to his creative project.
- Offer workshops on time management.
- Encourage the project holder's spouse to attend interviews.

TIME MANAGEMENT

Contact List :

- Can I apply for family reunification?

<https://www.acm.gov.pt/-/tenho-condicoes-para-solicitar-o-reagrupamento-familiar->

- How do I apply for family reunification?

<https://www.acm.gov.pt/-/como-solicitar-o-reagrupamento-familiar->

- What is the process after making the application for family reunification?

<https://www.acm.gov.pt/-/qual-o-processo-apos-efetuar-o-pedido-de-reunification->

Organisations in my area :

.....
.....
.....

Useful websites :

.....
.....
.....

Funding

In parallel with traditional funding channels, there are several funding organisations adapted to migrant entrepreneurs' projects. The goal is to identify the correct organization according to the nature, location and activity of the project.

Definition / key knowledge :

Setting up a business in Portugal : Headquarters and activity in Portugal → Access to public and private funding dedicated to business creation.

Setting up a business in Portugal :

Headquarters and activity in Portugal + Total or partial activity abroad (ex : import / export)
→ In case of an activity in Portugal : access to public funding dedicated to business creation

Setting up a business abroad :

Setting up headquarters abroad → turn to specific funding



Funding

Contact List :

Company Counter on Time : <https://www.acm.gov.pt/-/balcao-empresa-na-hora>

Start ups and useful links : <http://portugalstartups.com/>

<http://startups.ativarportugal.pt/startups>

<http://startuplisboa.com/>

<http://www.investbraga.com/startup/?ref=startups.pt>

<http://porto.startupirates.org/>

National Association of Young Entrepreneurs

<http://www.inovaportugal.com/projecto/>

Hottest startups : <http://novaweb.pt/blog/50-hottest-startups-in-portugal-2014/>

What is expert support for entrepreneurs? : <https://www.acm.gov.pt/-/o-que-e-o-apoio-especializado-a-emprededores->

Assistance or funding in my area :

.....
.....
.....

Useful websites :

.....
.....
.....

SPECIFIC SUPPORT

This data sheet presents the host and support organisations offering specific offer to migrant entrepreneurs and addressing the issue of business creation. Operators supporting the creation of businesses under common law also provide support to migrants, but will not be presented here.

School career Before migration

- Country of Origin
- Cultural Cultures
- Skills acquired in the country of origin
- Equivalence of diplomas

Current situation

- Administrative situation
- Length of residence in Portugal
- Level of proficiency in French
- Family environment

Long-term vision

- Homecoming Project
- Migration to another country
- Willingness to settle permanently in United Kingdom
- Family reunification
- Creative project in Portugal or abroad

ADVICE / ANALYSIS

- Do not hesitate to direct a titular project to organizations specialized in supporting migrants: these organizations can work on valuing social capital, analyzing migratory trajectories, etc.
- Address the issue of isolation with the creator and encourage him to be supported in his footsteps by a network of business creation.

SPECIFIC SUPPORT

Contact List :

Migrant Helpline

808 257 257 (from fixed network)

21 810 61 91 (from mobile network and to those connecting from abroad)

National Migrant Integration Support Centre (CNAIM)

Conditioned face-to-face service. Avoid unnecessary travel. Opt for digital channels (e-mail and My CNAIM app) and telephone channels (Migrant Helpline)

CNAIM Lisbon

Face-to-face service only by appointment

Rua Álvaro Coutinho, 14

1150-025 Lisbon

Fax: 21 810 61 17

Website: www.acm.gov.pt

E-mail: cnaim.lisboa@acm.gov.pt

CNAIM North

Face-to-face service only by appointment

Av. de France, 316

Capitol Building

4050-276 Port

Tel: 22 207 38 10

Fax: 22 207 38 17

E-mail: cnaim.norte@acm.gov.pt

PO ISE Warnings: fundos.portugal2020@acm.gov.pt

FAMI Warnings: fundos.comunitarios@acm.gov.pt

Table of The Confinement Plan also available in Arabic (ar), Bangla (bn), French (fr), Hindi (hi), English (en), Mandarin (zh), Nepalese (ne), Romanian (ro) and Russian (ru).

Guide on COVID-19 of the Medical Association of the World Portugal:

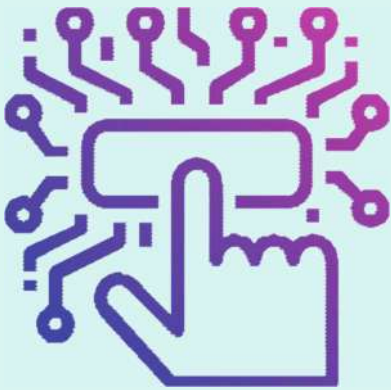
<https://www.medicosdomundo.pt/>

IOM leaflet on COVID-19 in more than 30 languages. Three IOM documents on Covid-19 for migrants, in several languages.

DIGITAL SUPPORT

This data sheet presents the reception and support structures that offer IT training specifically dedicated to migrant entrepreneurs and addressing the issue of business creation.

It is important that the professional considers in advance the following elements in providing support and in carrying out a "digital diagnosis" and to measure the degree of familiarity with digital tools:



The various types of content

- Office knowledge
- do online research,
- the files and data,
- solve technical problems
- mobilize digital culture.

Office automation certifications

- Digicomp

ADVICE / ANALYSIS

- Do not hesitate to guide in a titular project for structures specialized in supporting migrants: these structures can work on improving the level of mastery of the tools, the needs inherent in the planned project, etc.

DIGITAL SUPPORT

Contact List :

- Disruptive Digital Education :
<https://edit.com.pt/escola-digital-cursos-formacao-porto-lisboa/>
- IEFP Training: <https://www.iefp.pt/formacao>
- RVCC : <https://www.iefp.pt/rvcc>

Organisations in my area :

.....

.....

.....

Useful websites :

.....

.....

.....

IDEAS BOX

Guidance

- Creation of clubs of migrant entrepreneurs that bring together the project holders accompanied by a professional: exchanges, debates, networking, conferences, thematic workshops.
- Creation of workshops in partnership with Portuguese language learning organizations to introduce migrants with the vocabulary of business creation.
- Workshop on position of company holders (self-affirmation and self-confidence...).
- Networking.
- Workshop on migratory routes and skills / biographical approach (possibility of working with photo-language tool...).
- Most accessible work tools: Business Model Canvas, present your project in the form of drawings, products and services, etc.

Local development

- Count on networks, migrant associations for local development projects.
- Organize events that bring together different actors from the territory to highlight the impact of migrant entrepreneurs.

Time management

- Creation of group mentoring sessions. For example, focus the group meeting to discuss the issue of childcare and the time spent creating activities. Testimonies, counsel, help.
- Workshop "Time Management".

Funding

- Identify in-place and intercommunitary funding in the area.
- Develop and optimize speech for a funder.
- Propose workshops that provide specific funding

PROJECT PARTNERS



DEVELOPED BY



BEin
EUROPE