



**BEin**  
**EUROPE**



Erasmus+



# **Guide to support migrant nascent entrepreneurs :**

## **Practical booklet - Greece**

The European Commission's support for the production of this publication does not constitute an endorsement of the content, which reflects only the views of the authors, and the Commission cannot be held responsible for any use of the information contained therein.

# CONTEXT

« In the sensitive debate about immigrants in Greek society, their contribution to the creation of activities is worth mentioning, as it is synonymous with the desire for professional integration. »



25 000

In view of the recent dramatic increase in number of migrants and refugees in Greece, the integration is becoming increasingly important both in politics and in practice.

The professional integration of migrants and refugees is recognised as part of their successful social integration. Moreover, it could be beneficial for the economy and society of the host countries.

(Freudenberg, Halberstadt, 2018).

"These observations lead us to look at the creation of businesses by this population and to speak in favour of the implementation of tailored support."

# GUIDE PRESENTATION

## WHAT ?

A guide that lists the main offers existing in each country partner of the BE IN EUROPE project and responds to the themes that mark the path of migrant entrepreneurs and their recommendations. The main contribution of the guide is its adaptation to each country, every region, every area, every ethnic minority, every specificity sought.



## WHAT FOR ?

Europe and its authorities recognise the strong entrepreneurial potential of people from other countries and cultures, where setting up a business is very important. There is therefore a real interest in encouraging the creation of businesses by this group of people.

## FOR WHOM ?

This guide is aimed at professionals who need to raise awareness, identify, welcome, guide and accompany migrant entrepreneurs. According to the definition adopted by the Supreme Integration Council, an immigrant is a person born abroad and resides in Greece.



## BY WHOM ?

This tool is the result of the collective work of the European BE In EUROPE.

# Contents

Support for migrant entrepreneurs

**05** User Guide

---

**06** Language Training

---

**07** Administrative status

---

**09** Time management

---

**11** Funding

---

**13** Specific support

---

**15** Digital Support

---

**17** Proposal of actions

# How to use this guide ?

***On the left hand page you will find the below, with in this order:***



***On each page are ordered the necessary information of a theme to be addressed when supporting the migrant nascent entrepreneurs.***

***Each theme is determined by a color code.***

- 1 A definition of the framework relevant to the subject to be investigated.
- 2 Definitions/ dictionary you need to know.
- 3 The Tips/Analysis tab helps familiarize you with your partner.

***On the right hand page you will find, in this order:***



1. List of useful organisations for the procedures for setting up businesses by young immigrants.
2. A free space to list the structures that exist in your area.
3. The Technical Support tab makes your search easier.

# Language Training

With a person who has difficulties in knowing Greek, it is important to be able to determine his languagesituation.



**Alpha** --> Sets the person who is not trained in the language of the country of origin.

**Illiteracy** --> Defines a person who has followed an educational path without retaining basic knowledge.

## Advice / Analysis

- In Greece, knowledge of the language is not an important factor in other situations. However, if someone is interested in starting a business, learning the Greek language is essential.

# Language Training

## Contact List :

- Manual for the learning of the Greek language to migrants and asylum seekers:
- <https://sinialo.espiv.net/wp-content/uploads/2012/05/immigrantsbook.pdf>
- **Wikibooks:** Manual for learning the Greek language to immigrants:
- [File:L-Pack greco. pdf - Wikibooks. org](#)

## Useful Websites

- Coordination centre on migrant and refugee issues of the municipality of Athens: [https://Www. accmr. Gr/EI/%Cf%85%Cf%80%Ce%B7%Cf%81%Ce%B5%Cf%83%Ce%Af%Ce%B5%Cf%82/service/16. Html](https://Www.accmr.Gr/EI/%Cf%85%Cf%80%Ce%B7%Cf%81%Ce%B5%Cf%83%Ce%Af%Ce%B5%Cf%82/service/16.Html)

## Organisations in my area:

TRANSFER: Offers free literacy courses and a certificate of attendance.

([Www. metadrasi. Org](http://Www.metadrasi.Org)).

Bodosaki Foundation: Offer of free literacy courses ([Www. bodossaki. Gr](http://Www.bodossaki.Gr)).

- ◆ Drama school: Offers free courses in Greek education, art and culture. ([Www. theater-school. Com](http://Www.theater-school.Com)).

- ◆ Greek language centre: offers literacy courses and a certificate for professional purposes.

- ◆ ([Www. Greek-language Gr](http://Www.Greek-language.Gr))

# Administrative status

In a business creation program, the first step is to get to know the administrative situation of its owner.



**Migrant** --> Valid residence permit, Certificate of tax return of immigrants, Certificate of criminal record of foreign authorities, Recognition of a professional degree in Greece.

**Asylum seeker** --> Valid asylum seeker card, Valid 'international asylum seeker protection card'

**Dual nationality /naturalisation** --> Procedures for setting up activities, regardless of legal status, vary according to the administrative situation of the foreign nationality entrepreneur

## Administrative Status

Application for Greek citizenship

- Copy of the declaration on Greek citizenship you submitted to the municipality
- Black and white ID photo
- Residence permit (7 years)
- Passport or other travel document
- Tax return of the previous year
- Asylum application / Political refugee / Beneficiary of subsidiary protection

## Procedures

- No special formalities
- No special formalities
- No special formalities
- Once refugee status has been recognized, you will make the decision to issue an ADET (residence permit).
- No special formalities
- No special formalities
- No establishment of an undertaking: before the status of 'beneficiary of subsidiary protection' or 'political refugee' status is ratified

## Advice / Analysis

- In Greece, there are many bureaucratic issues, making all procedures time-consuming and complicated.
- Therefore, there are many public areas to which one can turn for help or support on the above issues (OAED, IOM- International Organisation for Migrants).



# Administrative Status

## Contact List :

.....

.....

.....

## Organisations in my area :

- Citizen Service Centres / JEPs: Given the complex and many issues of bureaucracy in Greece, people can also turn to Citizen Service Centres for assistance and support on the procedures for all documents they need depending on their situation:

[Home \(kep.gov.gr\)](http://kep.gov.gr)

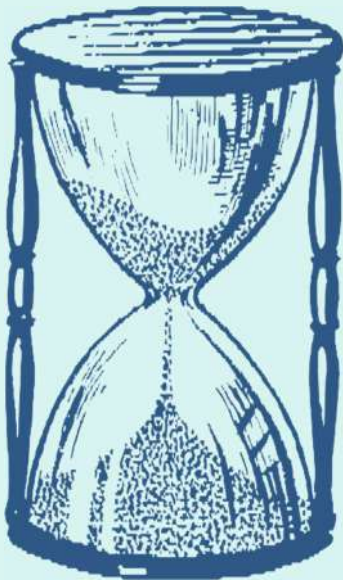
## Methodological support for research :

- ◆ Due to the many bureaucratic issues that exist in Greece, people can often turn to police stations on their site to seek help or
- ◆ information about the procedures required regarding their documents.
- ◆

# Time Management

This section lists organisations that offer help in managing the time devoted to a professional activity or even to day-to-day processes related to personal or family life. These organisations are not exclusively aimed at immigrants.

Time management combines the following topics and leads to an examination of the availability problems associated with them :



**Parenthood and single parenthood** ---> Number and age of children, School and child activities, Childcare, Financial resources, Isolation, Child health status

**Spouse** --> Occupational status, Ethics and financial support, Participation of the spouse in the project, Distribution of roles in family life, Status of the entrepreneur's spouse: partner or employee.

**Socio-occupational status** --> Employee: duration of contract, Search for persons: compensation or not, allowances, mandatory appointments, Students, trainees: course schedule, Volunteers, cooperative life: timetables and mission obligations

## Advice / Analysis

- Offer time management workshops.
- Work with the project owner to manage time: specify a schedule with them during the week, relative to their project.
- Encourage the project owner's spouse to attend interviews.
- Development of training programmes dedicated to strengthening skills and competences.

# Time Management

## Contact List :

- **Center for the child - Fortress** : A special area for children from different backgrounds, offering educational and recreational activities. (Centre for the Child - Guards | [Network for the Rights of the Child \(ddp.gr\)](#)).
- **PROSVASIS**: A programme aimed at the social inclusion and empowerment of unaccompanied adolescents and young refugees.
- **HELIOS**: A program that offers support, advice, assistance, social inclusion and education for immigrants.

## Organisations in my area :

- Network for Children's Rights / Network for the Rights of the Child: Strengthening social solidarity and protecting children from all forms of discrimination. ([Network for the Rights of the Child \(ddp.gr\)](#)).
- Greek Council for Refugees / Greek Council for Refugees: Focus on supporting migrants in Greece. ([GCR - Home](#)).
- The "Children's Home" Foundation / Foundation "The Children's Home": Custody and care of pre-school children in support of the working mother. ([Foundation - Children's Housing : Foundation - Children's Housing \(paidikesteges.gr\)](#)).
- Friends of the Child / Friends of the Child: Offering protection and care for children with health problems and serious financial problems. ([NGO, Home \(filoitoupediou.gr\)](#))

## Methodological support for research :

- ♦ For more information, please contact the town hall of your place of residence
- ♦ Contact neighbouring mediators (childcare facilities, neighbourhood associations, etc.).
- ♦ The relevant websites provide useful information (check the book list).

# Funding

In addition to the traditional funding channels, there are various financial institutions adapted to the projects of migrant-entrepreneurs. The goal is to determine the right organization according to the nature, location and scope of activity.

## Definitions / Basic Knowledge:

### Start a small business in your area:

--> Access to public and private financing for business creation.



### Create a medium-sized business in your area/community:

--> In case of activity in Greece: Access to public funding for the creation of enterprises.

### Start a business abroad:

--> Specific financing.

## Advice / Analysis

- OAED as an organisation is the public authority and central management structure offering unemployment insurance, social protection of maternity and the family and vocational education and training.
- IOM: The International Organisation for Migration supports and offers social orientation for migrants in Greece.
- Solidarity Now: An organization that offers guidance, assistance and support to migrants in order to rebuild their lives.
- UN High Commissioner for Refugees-Greece: An organisation that aims to save human lives, protect their rights and ensure a better future for refugees and displaced persons

# Funding

## Contact List :

.....  
.....  
.....

## Organisations in my area :

.....  
.....  
.....

## Methodological support for research :

- ♦ OAED: Homepage - ORGANISATION OF WORKING POWER (oaed.gr).
- ♦ IOM - International Organization for Migration: Migrants in Greece  
Solidarity Now: Homepage - Solidarity Now
- ♦

# Specific Support

This fact sheet introduces host and support organisations that support immigrant entrepreneurs who have trouble setting up businesses. Support bodies for the creation of businesses under common law also provide support to migrants, but will not be presented here.

## School career before migration

- Country of origin
- Cultural aspects
- Skills acquired in the country of origin
- Equivalence of diplomas

## Current status

- Administrative situation
- Duration of stay in Greece
- Level of proficiency in Greek
- Family environment

## Long-term vision

- Return to home program
- Immigration to another country
- Willingness to settle permanently in Greece
- Family reunion
- Create a project in Greece or abroad

## Advice / Analysis

- Do not hesitate to direct the target group to organisations specialising in supporting migrants: such organisations relate to the exploitation of social capital, etc.
- Address the issue of low accessibility to services and encourage the person concerned to seek help from a network of business start-up consultants.

# Specific Support

## Contact List :

- o European Commission: Support and education of migrants- entrepreneurs. (European Commission, official website [europa.eu](http://europa.eu)).
- o UM: Support and assistance for migrants in Greece. [www.oym.gr](http://www.oym.gr).
- o NOSTOS: Providing support , information and advice to refugees and migrants. (E. Mr. I don'tknow. I'm sorry. P. The. NOSTOS [nostos.org.gr](http://nostos.org.gr)).
- o ELIX/ELIX: Offers programs that support, inform, advise and educate migrants and refugees. [Social programmes \(elix.org.gr\)](http://Social%20programmes%20elix.org.gr).

## Organisations in my area :

- o NOSTOS: Providing support, information and advice to refugees and migrants. [E.K.P.S.P.O. NOSTOS \(nostos.org.gr\)](http://E.K.P.S.P.O.%20NOSTOS%20nostos.org.gr).

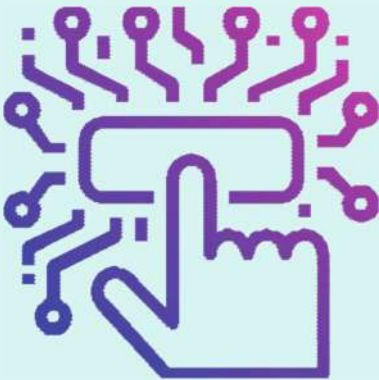
## Methodological support for research :

- ◆ List of support organisations and systems
- ◆ Learn about relevant organizations that may have specialized offers
- ◆ Learn about business associations.

# DIGITAL SUPPORT

This fact sheet presents the reception and support infrastructures that offer it training to immigrant entrepreneurs and that deal with the issue of business creation.

It is important for the professional to consider the following elements when providing support and to make a "digital diagnosis" in advance to calculate the degree of familiarity with digital tools:



- **ECDL Core: Basic knowledge.**
- **ECDL Core in progress**
- **ECDL Experts: Professional skills.**
- 

## Advice / Analysis

o Do not hesitate to direct the person concerned towards the structures specialising in supporting migrants: these structures will be able to enhance the level of knowledge of the tools, the needs inherent in the planned project, etc.

o Certification procedures are provided through private services. (e.g. INFORMATION CERTIFICATION): ECDL certification • ECDL courses • Informatics Schools • IT Expert , ASSOS : ASSOS | Centres for foreign languages and information technology - Thessaloniki , KOUFOPOULOS: | Computer | Koufopoulou (frontistiriapallinis.gr)). Language certifications are also compulsory knowledge to facilitate the process.



# DIGITAL SUPPORT

## Contact List :

- Curing the Limbo: A program aimed at implementing an innovative integration model that allows refugees to become socially active. ([HOME — Curing the limbo](#)).
- Immigrant Integration Center: Informatics Training for Immigrants. (ImmigrantIntegration Centre - Municipality of Athens ([accmr.gr](#))).

## Organisations in my area :

.....

.....

.....

## Methodological support for research :

- ◆ List of support organisations and systems.
- ◆ To learn about relevant structures-organizations that may have specialized training offers.

# PROPOSAL OF ACTIONS

## Guidance

- ◆ Creation of groups of immigrant entrepreneurs bringing together business owners of projects accompanied by a professional: exchanges, discussions, networking, conferences, thematic workshops.
- ◆ Creation of workshops in collaboration with Greek language learning organizations to introduce immigrants to the vocabulary they need in order to create their own business.
- ◆ Workshop on the position of business owners (confidence).
- ◆ Networking (network enlargement).
- ◆

## Local development

- ◆ Rely on networks, immigrant associations for local development projects.
- ◆ Organize events that bring together different actors in the region to highlight the impact of immigrant-entrepreneurs.

## Time Management

- ◆ Create group guidance sessions. E.g. meeting of a target group to discuss the issue of childcare and the time devoted to creating activities.
- ◆ Time Management Laboratory.

## Funding

- ◆ Identify informal and intra-Community financing instruments in someone's area.
- ◆ Create a financier's speech.
- ◆ Organize workshops on the implementation of training on financial issues.

# Project Partners



Developed by



**BE***in*  
**EUROPE**